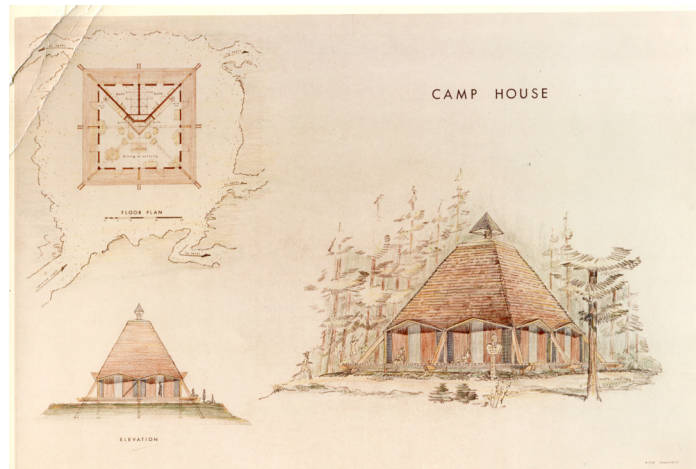


# Camp Arrowhead

Located in the Columbia River Gorge near Stevenson, Washington, Camp Arrowhead has 260 acres of forest, meadows, trails, a pool and a lake. Camp Arrowhead is located at the base of Dog Mountain and Wind Mountain and has varied terrain and dramatic views. It's also a great place to set up base camp for many other adventures in the Gorge such as mountain biking, climbing, wind surfing, kayaking and more! Please note that Camp Arrowhead is unavailable during summer camp season. Contact us for availability. **287 person total sleeping capacity.**

## HISTORY

After a five year search, this property at Wind Mountain was purchased in 1948. Originally called Camp Wind Mountain, plans quickly formed to build roads, erect buildings, establish a water system and bring in electric power. By 1964, the changing landscape and wear of old buildings called for reconstruction. The camp officially became Camp Arrowhead in 1968, and much of the lodging still standing today was built in this era. Amenities like the swimming pool were added later. In 2005, the Marie Lamfrom climbing wall was constructed.



Archery is available year-round and must be reserved prior to your stay. Groups must provide their own certified archery instructor.



There are canoes for boating on the lake. Boats must be reserved prior to your stay. Groups must provide their own certified lifeguard and canoe instructor.



There is a fire pit in all the Unit House areas. Wood is provided.

The lake has a dock for swimming, and a pool is available seasonally. Groups must provide their own certified lifeguard and follow *Safety Activity Checkpoints (Page 21)*.

## Facilities & Lodging

### MAIN LODGE AREA

There is an inside dining area with a large fireplace that can seat approximately 64 and an outside covered dining area that seats 88. There is a large, fully-equipped commercial kitchen. Dishes and utensils available. Sleeping is on the floor with mattresses provided. 40 person total sleeping capacity.

### UNIT HOUSE AREAS

There are four unit house areas, each surrounded by nine rustic cabins sleeping up to four people each. The unit houses have an overnight capacity of 16 people. Each unit house has toilets, showers, electricity, a small kitchen and fireplace insert. 52 person overnight capacity for *each* unit area, 208 person total sleeping capacity.



### STAFF HILL

This area is nearest to the lodge. There are four rustic "birdhouses" that sleep four people each. There is also a director's cabin that sleeps three. Flush toilets and showers are nearby. 19 person total sleeping capacity.

### PLATFORM TENT UNIT

There are five platform tents sleeping four people each. The unit has a fire pit, cold running water, pit toilets, picnic tables and no electricity. Available seasonally. 20 person total sleeping capacity.

## Nearby Activities



**RAFTING AND TUBING**



**MOUNTAIN BIKING**



**WIND SURFING**

**COLUMBIA GORGE INTERPRETIVE CENTER**

**ZIP LINE AND AERIAL PARK TOUR**

